

=> fil reg

FILE 'REGISTRY' ENTERED AT 14:20:03 ON 18 OCT 2005
 USE IS SUBJECT TO THE TERMS OF YOUR STN CUSTOMER AGREEMENT.
 PLEASE SEE "HELP USAGETERMS" FOR DETAILS.
 COPYRIGHT (C) 2005 American Chemical Society (ACS)

Property values tagged with IC are from the ZIC/VINITI data file
 provided by InfoChem.

STRUCTURE FILE UPDATES: 17 OCT 2005 HIGHEST RN 865410-76-0
 DICTIONARY FILE UPDATES: 17 OCT 2005 HIGHEST RN 865410-76-0

New CAS Information Use Policies, enter HELP USAGETERMS for details.

TSCA INFORMATION NOW CURRENT THROUGH JULY 14, 2005

Please note that search-term pricing does apply when
 conducting SmartSELECT searches.

```
*****
*
* The CA roles and document type information have been removed from *
* the IDE default display format and the ED field has been added, *
* effective March 20, 2005. A new display format, IDERL, is now *
* available and contains the CA role and document type information. *
*
*****
```

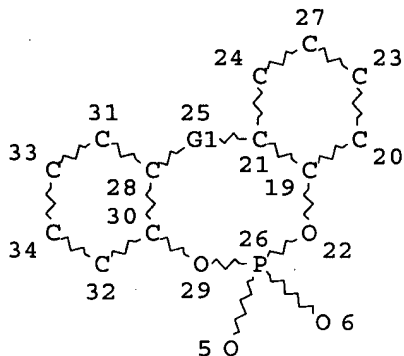
Structure search iteration limits have been increased. See HELP SLIMITS
 for details.

REGISTRY includes numerically searchable data for experimental and
 predicted properties as well as tags indicating availability of
 experimental property data in the original document. For information
 on property searching in REGISTRY, refer to:

<http://www.cas.org/ONLINE/UG/regprops.html>

=> d sta que 143

L33 STR



REP G1=(1-4) C

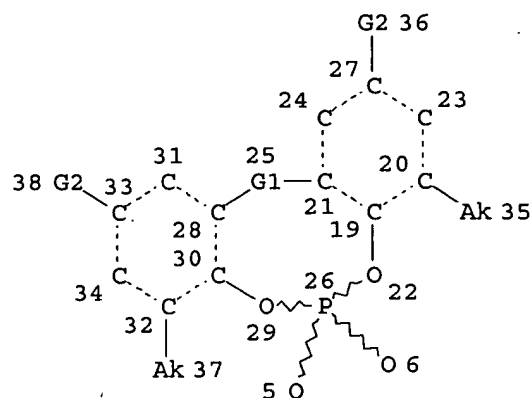
NODE ATTRIBUTES:

DEFAULT MLEVEL IS ATOM

DEFAULT ECLEVEL IS LIMITED

GRAPH ATTRIBUTES:
RING(S) ARE ISOLATED OR EMBEDDED
NUMBER OF NODES IS 18

STEREO ATTRIBUTES: NONE
L35 552 SEA FILE=REGISTRY SSS FUL L33
L39 STR



REP G1=(1-4) C
VAR G2=H/AK
NODE ATTRIBUTES:
DEFAULT MLEVEL IS ATOM
DEFAULT ECLEVEL IS LIMITED
ECOUNT IS M4 C AT 35
ECOUNT IS M4 C AT 37

GRAPH ATTRIBUTES:
RSPEC 27
NUMBER OF NODES IS 22

STEREO ATTRIBUTES: NONE
L41 177 SEA FILE=REGISTRY SUB=L35 SSS FUL L39
L42 SCR 1918
L43 84 SEA FILE=REGISTRY SUB=L41 SSS FUL L42

FULL SUBSET SCREEN SEARCH COMPLETED
SEARCH TIME: 00.00.01

84 ANSWERS

=> d his

(FILE 'HOME' ENTERED AT 13:45:16 ON 18 OCT 2005)
SET COST OFF

FILE 'HCAPLUS' ENTERED AT 13:45:27 ON 18 OCT 2005

L1	1	S	(W02000-JP3912 OR JP99-168864)/AP,PRN
		E	TAKAHASHI/AU
L2	9	S	E3
		E	TAKAHASHI K/AU
L3	1801	S	E3-E11,E41
		E	TAKAHASHI M/AU
L4	2069	S	E3-E7,E128-E130
		E	TAKAHASHI S/AU
L5	953	S	E3-E6,E87